

6 5 4 3 2 1

D

C

B

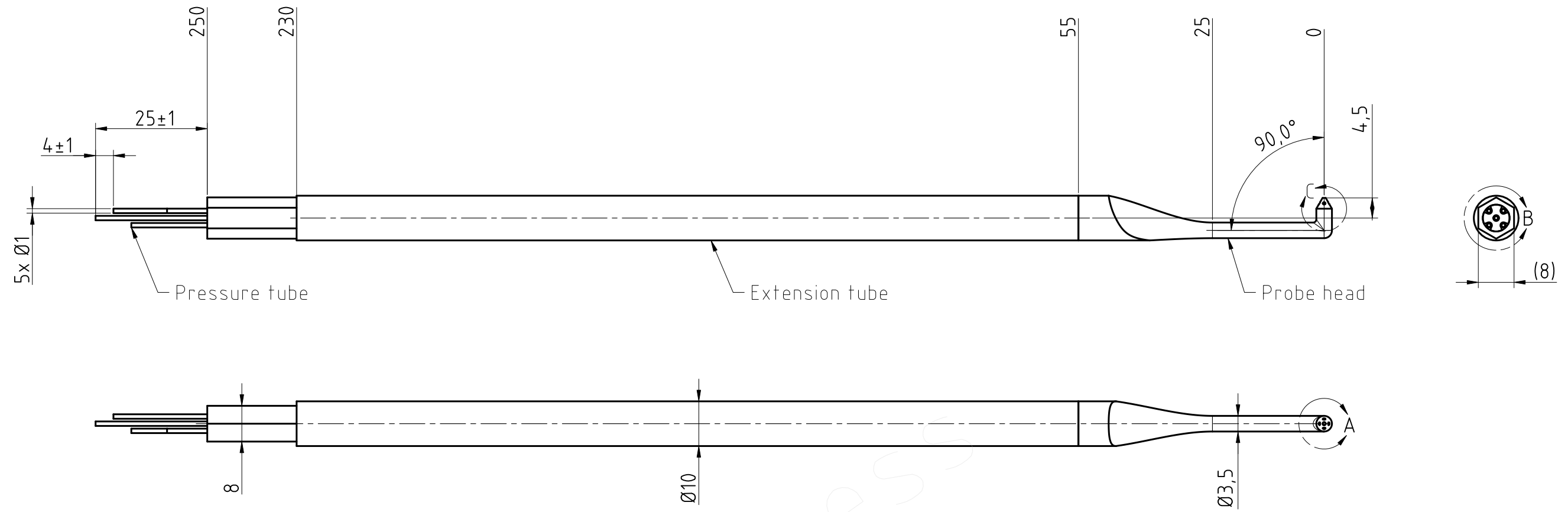
A

D

C

B

A

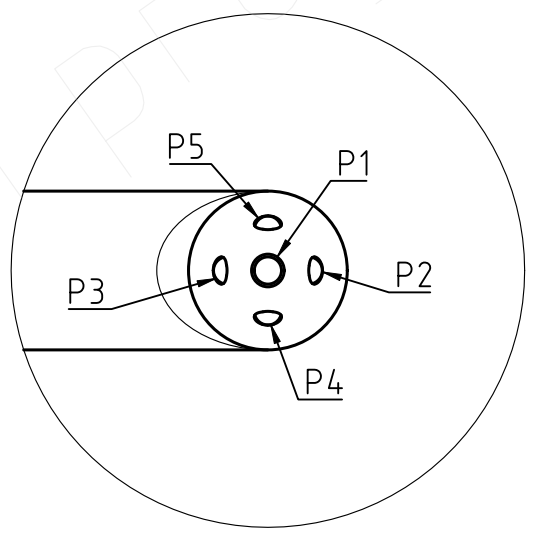


Pressure tubes are staggered by length  
 P1: longest  
 P5: shortest

Pressure tubes are glued in the tube for strain relief. ( $T_{max} = 80^{\circ}C$ )

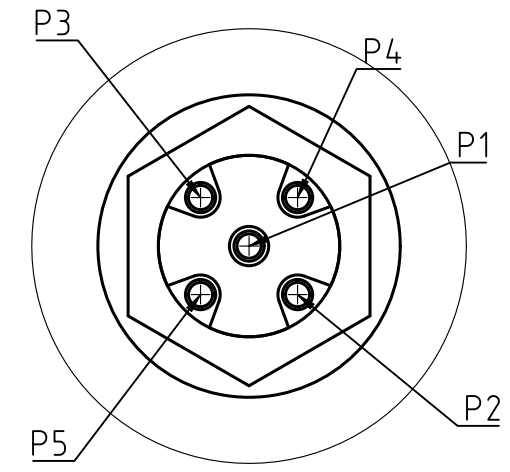
Probe head is permanently bonded to extension tube. ( $T_{max} = 80^{\circ}C$ )

Port numbering at probe tip:

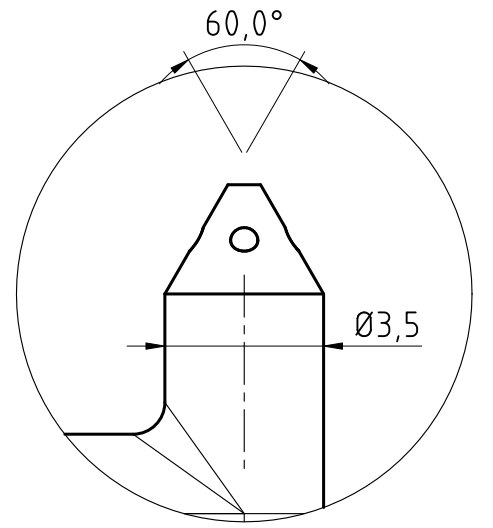


A  
6:1

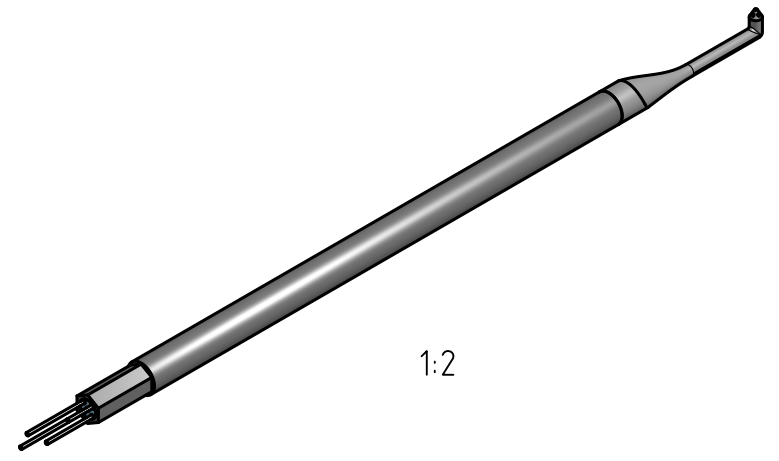
Port numbering at probe end:



B  
4:1



C  
6:1



1:2

DIMENSIONS ARE IN MM UNLESS MARKED OTHERWISE Tolerances ISO 2768 Class f / H (machined surfaces) Class m / K (unmachined surfaces)  Surface Finish: Machined surfaces $\sqrt{Ra 1,6}$ others: micro blasted	DRAWN	NAME	MATERIAL	DOC TYPE
	APPROVED	Sean Jenkins ( )	1.4404	Drawing
SIZE	vectors flow measurements in fluids Vectoflow GmbH Tel: +49 89 124149570 E-Mail: info@vectoflow.de		TITLE	
	A3	This document is proprietary and confidential. No part may be disclosed without prior written consent of Vectoflow.	Extended L-shaped 5-hole probe	
		PART NO.	L_5HP_8pz576	REV.
		SCALE	1:1	SHEET 1 of 1
		DATE	2022-03-09	

6 5 4 3 2 1